



# Parish School of Religion

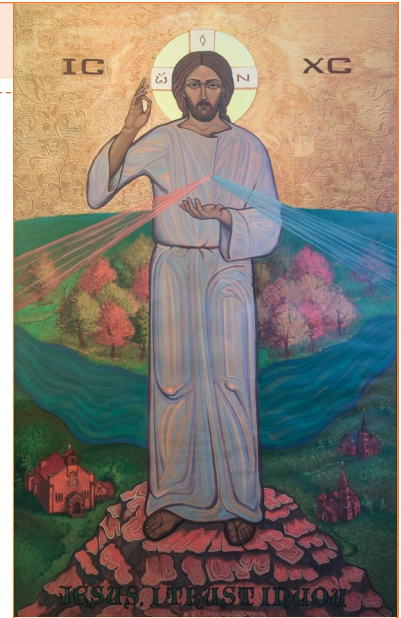
## Calendar

Sept 14: Class 1	Jan 4: Class 12
Sept 21: Class 2	Jan 11: Class 13
Sept 28: Class 3	Jan 18: Class 14
Oct 5: Class 4	Jan 25: Class 15
Oct 12: Class 5	Feb 1: Class 16
Oct 19: Class 6	Feb 8: Class 17
Oct 26: Class 7	Feb 15: Class 18
Nov 2: NO CLASS	Feb 22: NO CLASS
All Souls Day Mass	Ash Wednesday Mass
Nov 9: Class 8	Mar 1: Class 19
Nov 16: Class 9	Mar 8: Class 20
Nov 23: NO CLASS	Mar 15: Class 21
Thanksgiving Break	Mar 22: Class 22
Nov 30: Class 10	Mar 29: Class 23
Dec 7: Class 11	Apr 5: NO CLASS Holy Week
Dec 14: NO CLASS Christmas Break	Apr 12: Class 24
Dec 21: NO CLASS Christmas Break	Apr 19: Class 25
Dec 28: NO CLASS Christmas Break	Apr 26: Class 26
	May 3: Class 27

## PSR Times and Locations

All classes meet on Wednesdays. Families can choose the time and location that works best for them. Please see page 2 for PSR fees. Contact Theresa Conley with any questions or concerns.

Grades K—5 in Paulding	4:00—5:00 pm at the Paulding Ed Center
Grades K—5 in Antwerp	6:30—7:30 pm at the Antwerp Center
Grades 6—8 in Paulding	7:00—8:00 pm at the Paulding Ed Center
Grades 7—8 in Payne	7:00—8:00 pm at the Catholic School
Grades 6—8 in Antwerp	7:45—8:45 pm at the Antwerp Center



NATIONAL  
**Eucharistic  
Revival**

**FR. AUSTIN  
AMMANNITI**  
Pastor

**THERESA CONLEY**  
Coordinator of  
Religious Education

Work: 419-399-2576

Cell: 205-641-1624  
(call or text)

Email: [tconley@dmeparish.com](mailto:tconley@dmeparish.com)